



VANTAGE

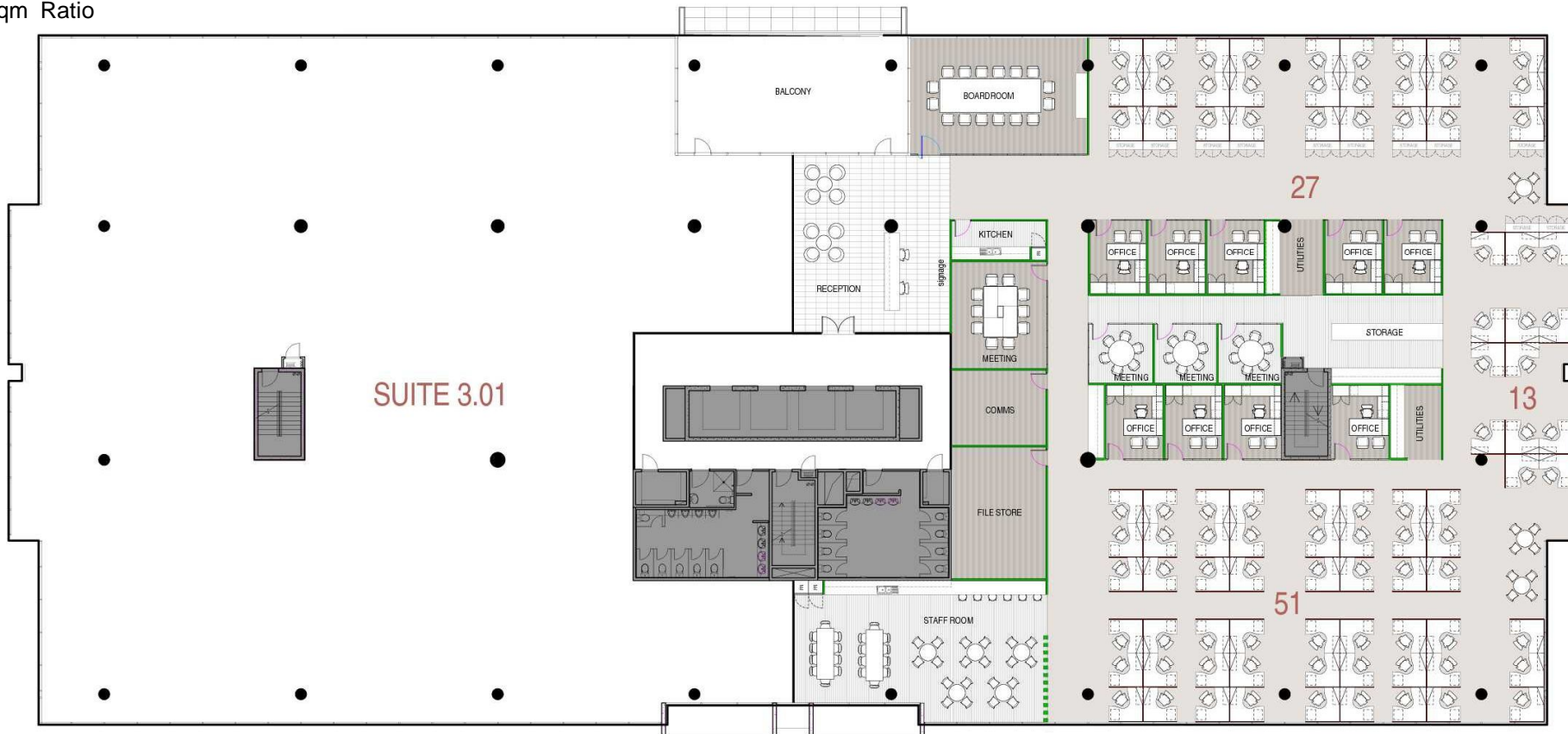
YOUR ADVANTAGE

PRESIDA
Building Strength

FITOUT CONCEPT LEVEL 4 - HALF FLOOR

Provides:

- 1 Boardroom
- 1 Meeting (10 person)
- 3 Meeting (6 person)
- 1 File Store
- 9 Office
- 91 Workstations
- 2 Receptionists
- 1,344 sqm floor area
- 102 Total Staff
- 1:13 Staff/sqm Ratio





VANTAGE

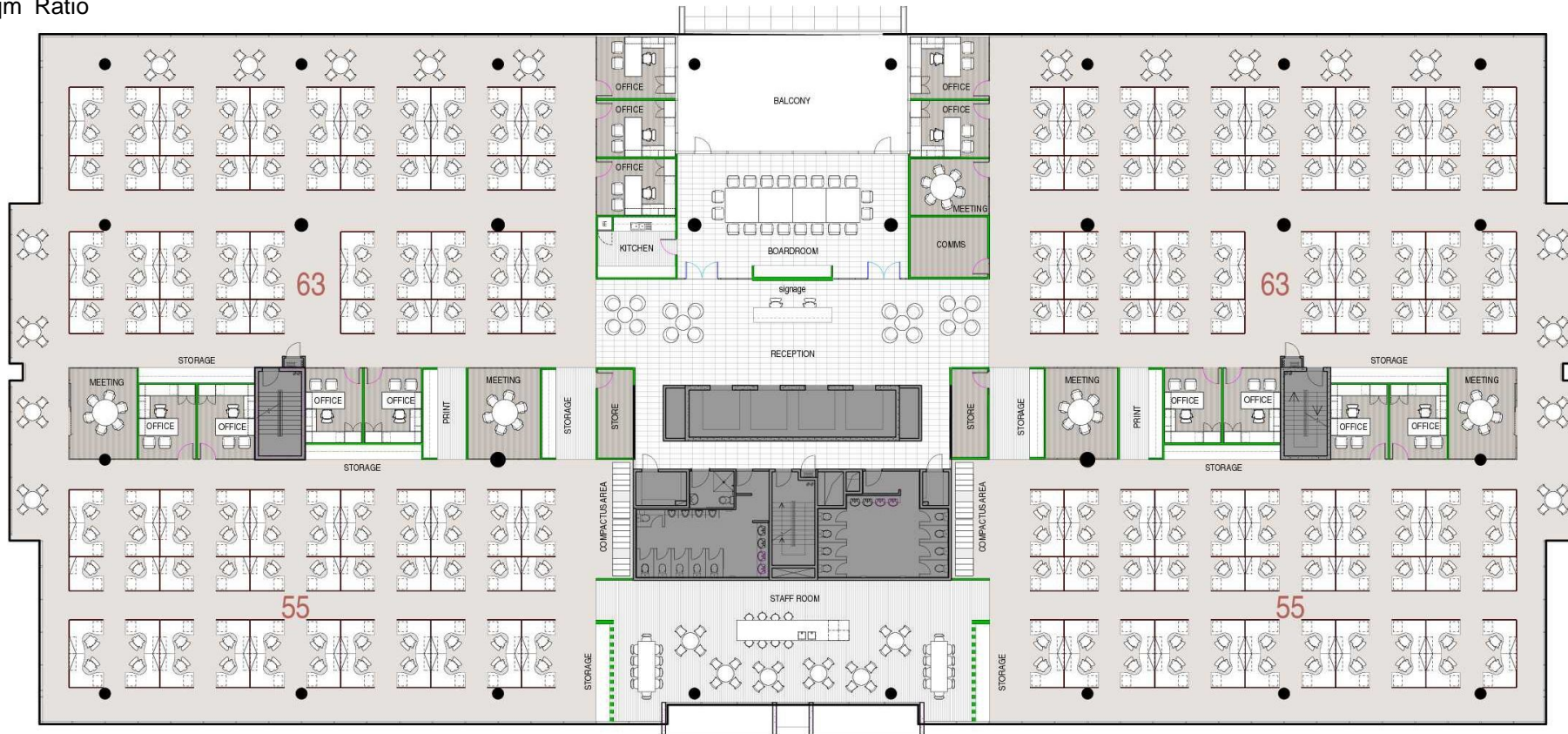
YOUR ADVANTAGE

PRESIDA Building Strength

FITOUT CONCEPT LEVEL 4 - HIGH DENSITY

Provides:

- 1 Boardroom
- 1 Meeting (12 person)
- 2 Meeting (6 person)
- 2 File Store
- 14 Office
- 236 Workstations
- 2 Receptionists
- 2,709 sqm floor area
- 252 Total Staff
- 1:11 Staff/sqm Ratio





VANTAGE

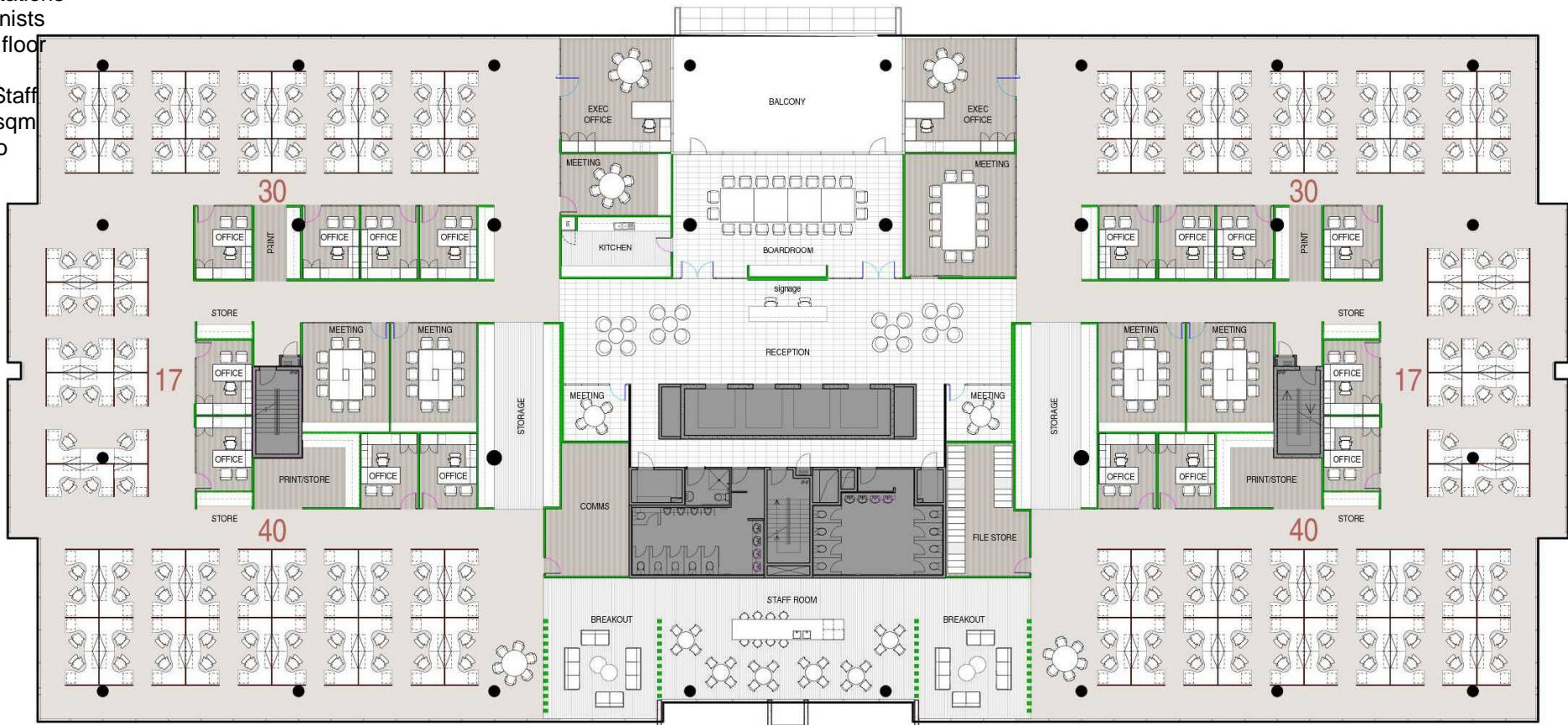
YOUR ADVANTAGE

PRESIDA
Building Strength

FITOUT CONCEPT LEVEL 4 - LOW DENSITY

Provides:

- 1 Boardroom
- 1 Meeting (12 person)
- 4 Meeting (10 person)
- 2 Meeting (6 person)
- 1 File Store
- 2 Executive Office
- 18 Office
- 174 Workstations
- 2 Receptionists
- 2,709 sqm floor area
- 196 Total Staff
- 1:15 Staff/sqm Ratio





VANTAGE

YOUR ADVANTAGE

PRESIDA Building Strength

FITOUT CONCEPT LEVEL 4 - QUARTER FLOOR

Provides:

- 2 Meeting (12 person)
- 1 File Store
- 5 Office
- 50 Workstations
- 1 Receptionists
- 630 sqm floor area
- 56 Total Staff
- 1:13 Staff/sqm Ratio

